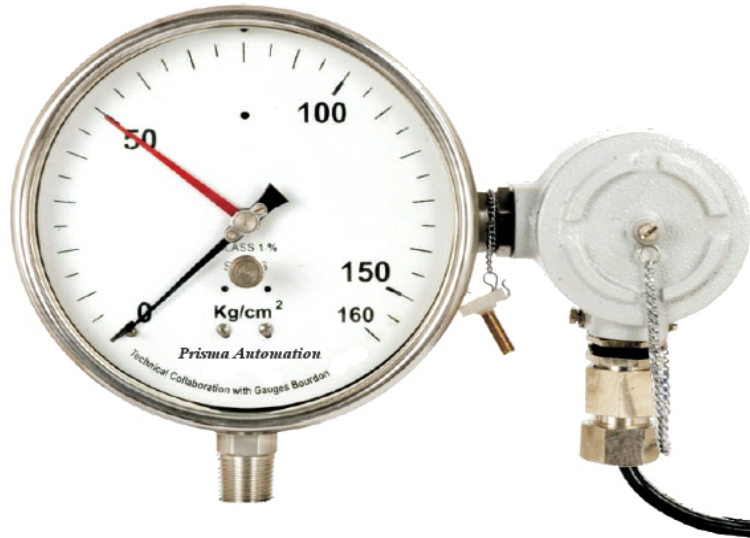


# Indicating Pressure Switches

**MODEL : PSA**

## Features

- Combination of indication and switch
- Choice of electrical contacts and microswitch
- One or two contacts possible
- Switch setting throughout the range externally
- High repeatability and low hysteresis
- Weatherproof or Flameproof housing
- Mil connector provided optionally.



## Specifications

<b>Dial</b>	100 mm / 150 mm, aluminium, white background, black markings
<b>Case</b>	Diecast aluminium with screwed bezel SS304, SS316 with bayonet bezel
<b>Protection</b>	Weatherproof to IP - 67 (IS 13947 part I) Flameproof to IIA IIB (equivalent to NEC C1. I, Div. 2, Gr. C & D)
<b>Bourdon</b>	SS316 Ti, Monel, Phosphor Bronze, SS316L
<b>Socket</b>	SS316, Monel, brass, SS316, SS316 Ti
<b>Movement</b>	SS304, brass (with SPDT microswitch)
<b>Connection</b>	1/2" NPT (M) as standard
<b>Range</b>	(-)1 to 1600 kg/cm <sup>2</sup> minimum span of 4 kg/cm <sup>2</sup> (only standard ranges as mentioned under table 1)
<b>Accuracy</b>	± 1% FSD for indication ± 2% FSD for switching
<b>Overrange</b>	130% FSD
<b>Blow out disc</b>	Provided
<b>Zero reset</b>	Provided with contact assembly
<b>Contacts</b>	1SPST, single, normally open, closing on rise in pressure or vice versa, rated 30VA @ V AC 2 SPST, two contacts, independently adjustable, one normally open, other normally closed or both normally open or both normally closed, rated 30VA @ 230V AC 1SPDT, single microswitch, adjustable over entire range, rated 5 amp @ 230V AC (3A @ 28 VDC) 2SPDT, double microswitch, adjustable over entire range, rated 5 amp @ 230V AC (3A @ 28 VDC)
<b>Accessory</b>	Relay for the contact assembly to suit 5 amp @ 230V AC, separately mounted.

## Table 1

Gauge	System	Bar, kg/cm <sup>2</sup>	Least count
Compound	PB, SS	(-)1 to 3	0.10
	PB, SS	(-) 1 to 5	0.10
	PB, SS	(-)1 to 9	0.20
	PB, SS	(-)1 to 15	0.50
	PB, SS	(-)1 to 24	0.50
Pressure Gauge ('C' shaped Bourdon)	PB, SS	(-)1 to 39	1.0
	PB, SS	0 to 4	0.10
	PB, SS	0 to 6	0.10
	PB, SS	0 to 10	0.20
	PB, SS	0 to 16	0.50
Coil type Bourdon	PB,SS	0 to 25	0.50
	PB,SS	0 to 40	1.0
	SS	0 to 60	1.0
	SS	0 to 100	2.0
	SS	0 to 160	5.0
Coil type Bourdon	SS	0 to 250	5.0
	SS	0 to 400	10.0
	SS	0 to 600	10.0
	SS	0 to 800	20.0
	SS	0 to 1000	20.0
	SS	0 to 1600	50.0

For range other than above please contact our design dept.

## Benefits of Microswitch type over contact assembly

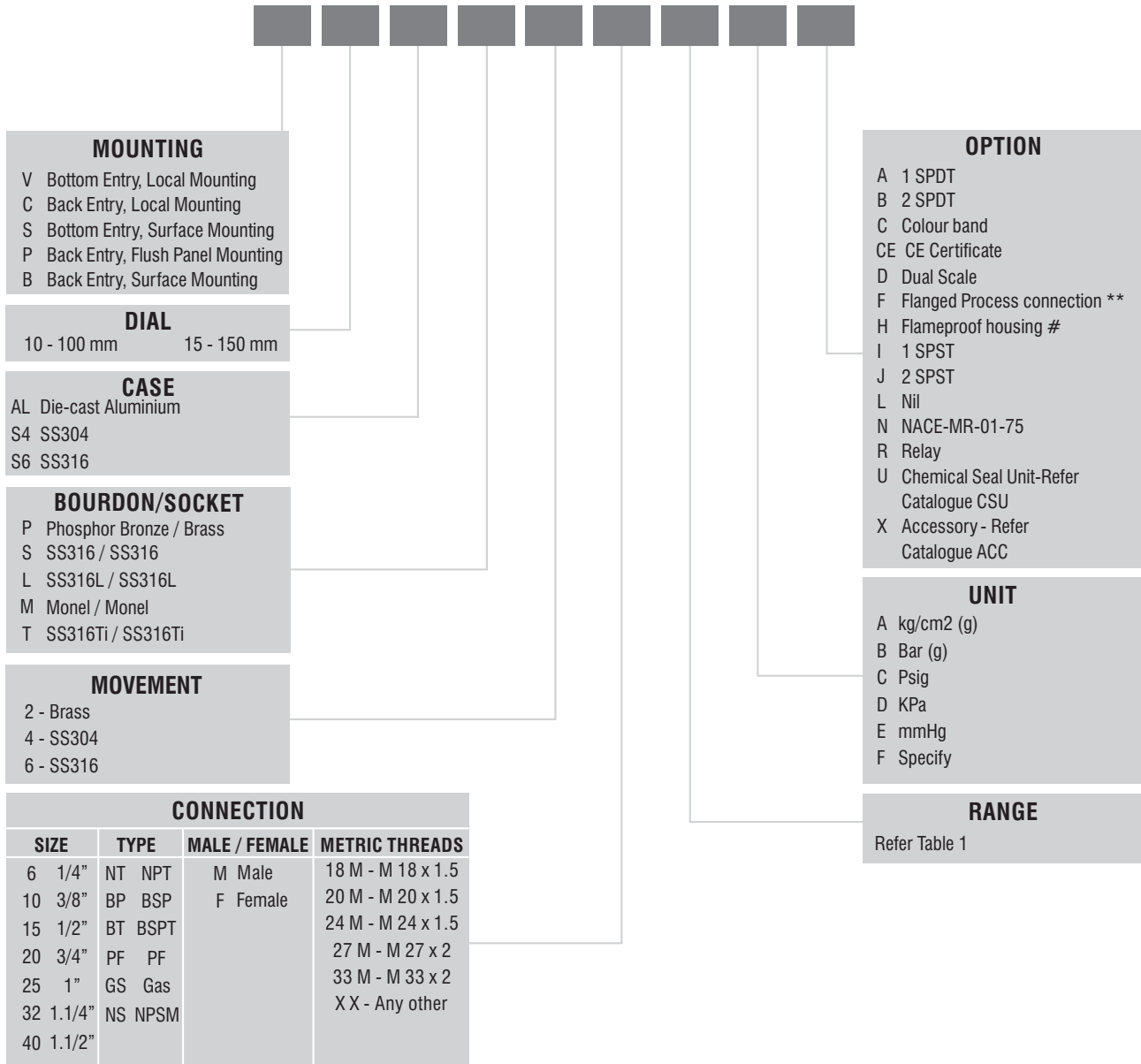
- Microswitch is rated 5 amp @ 230 VAC (3A @ 28 VDC). Hence use of relay is not required
- Microswitch offered as a combination of movement and switch is procured from Internationally reputed vendor.
- Microswitch assembly provides better switching accuracy and repeatability
- Compact design.

## Notes

- 1) Electrical contact assembly is not offered in flameproof version.
- 2) Flameproof version available only in diecast aluminium case.
- 3) Non-ferrous system is recommended up to 40 kg/cm<sup>2</sup>
- 4) Pressure switch can also be offered with chemical seal pressure gauges in weatherproof and flameproof cases.
- 5) Surface mounted flameproof housing with chemical seal pressure gauge is available with capillary.

## Ordering Information

### MODEL : PSA



\*\* For Flanged Process Connection refer the table (mentioned separately)

# Flame proof housing available in 100 mm dia dial and in aluminium cast only.